

Figure 1: Patient with "failed back syndrome" having bilateral ventroposterior thalamic electrodes and one periventricular gray electrode with excellent pain control.

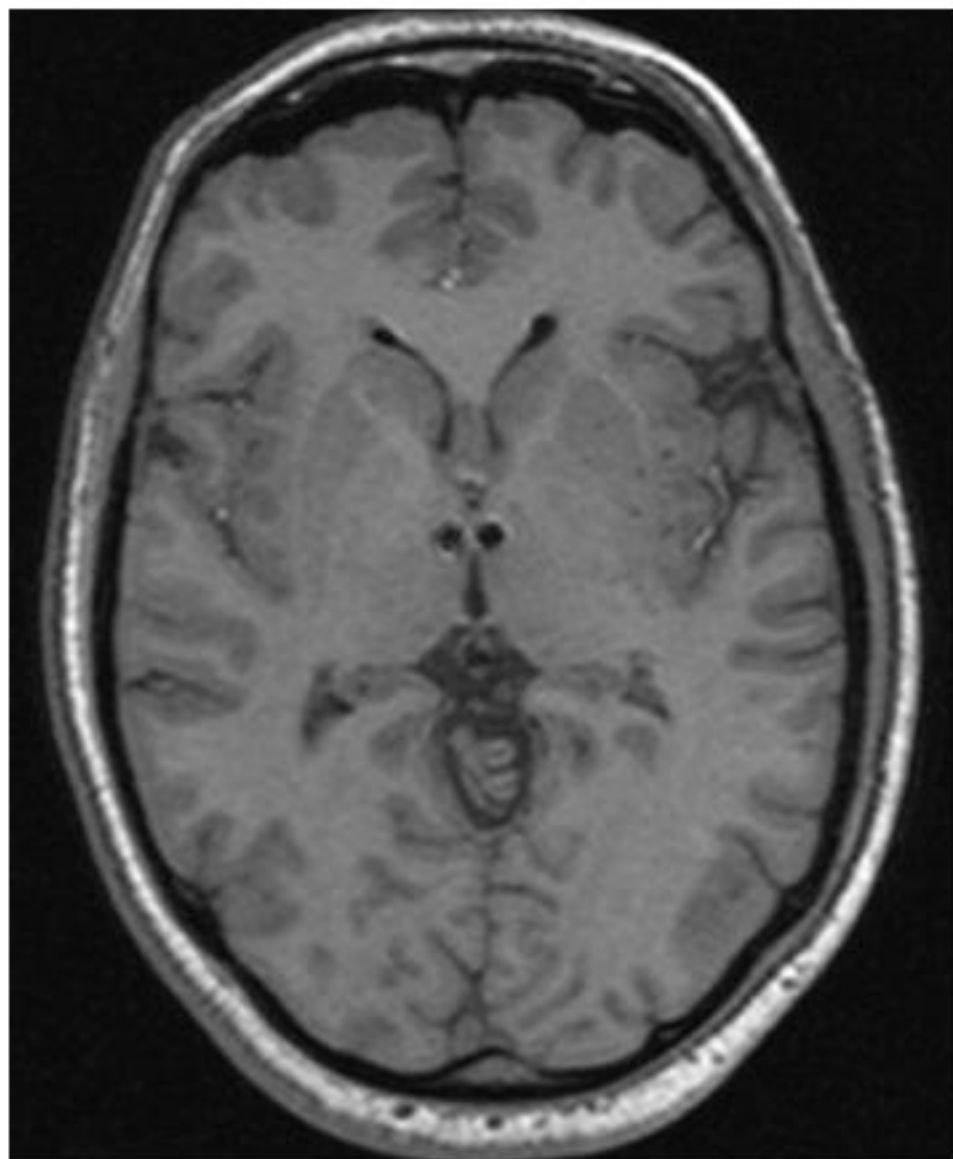


Figure 2: Patient with bilateral Cluster Headache having bilateral posterior hypothalamic electrodes.

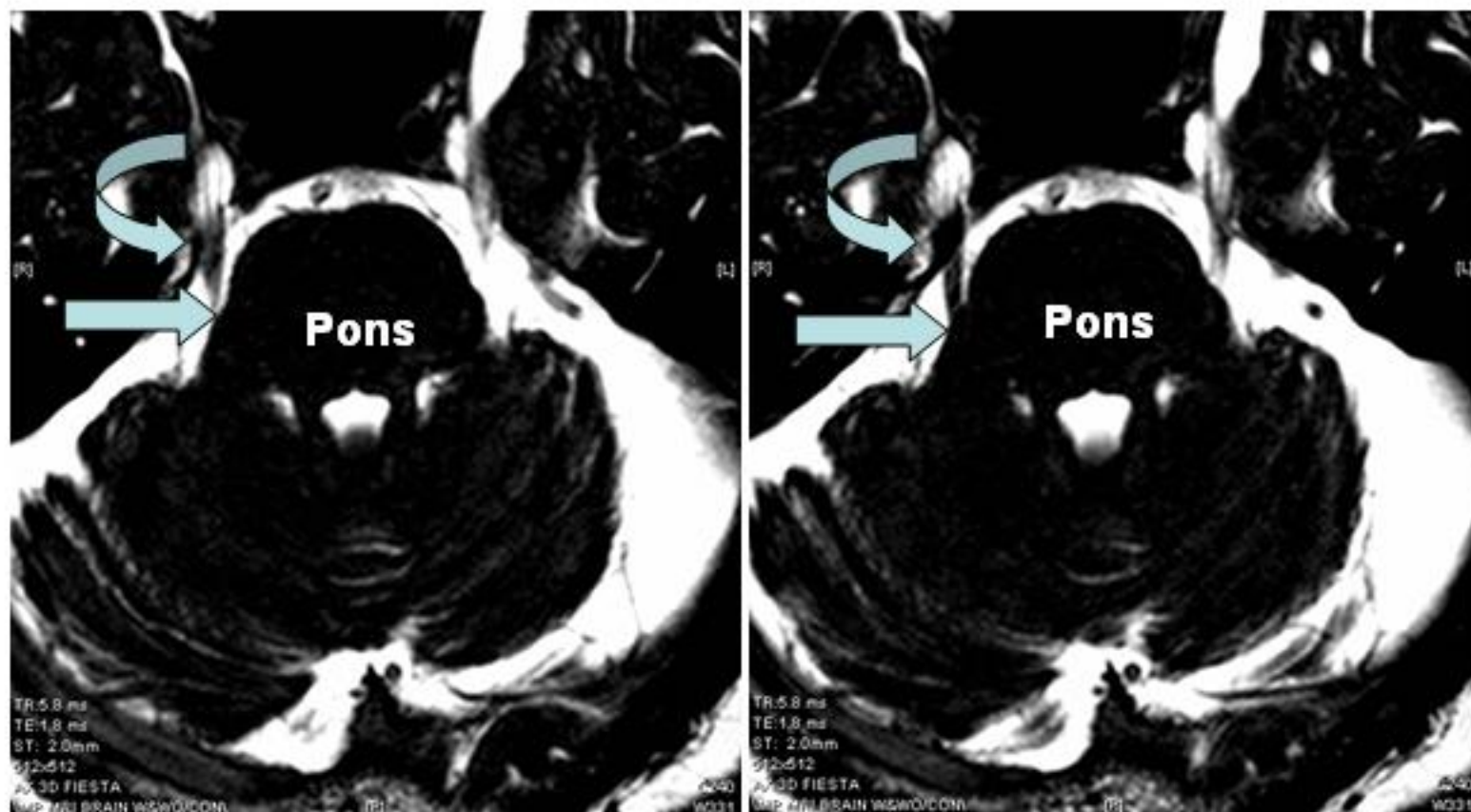


Figure 3: Exquisite anatomic visualization of the trigeminal nerve as it enters the pontine region (Straight Arrows). Notice also the gasserian ganglion and The three trigeminal divisions in the Meckel's cave (Curved Arrows)

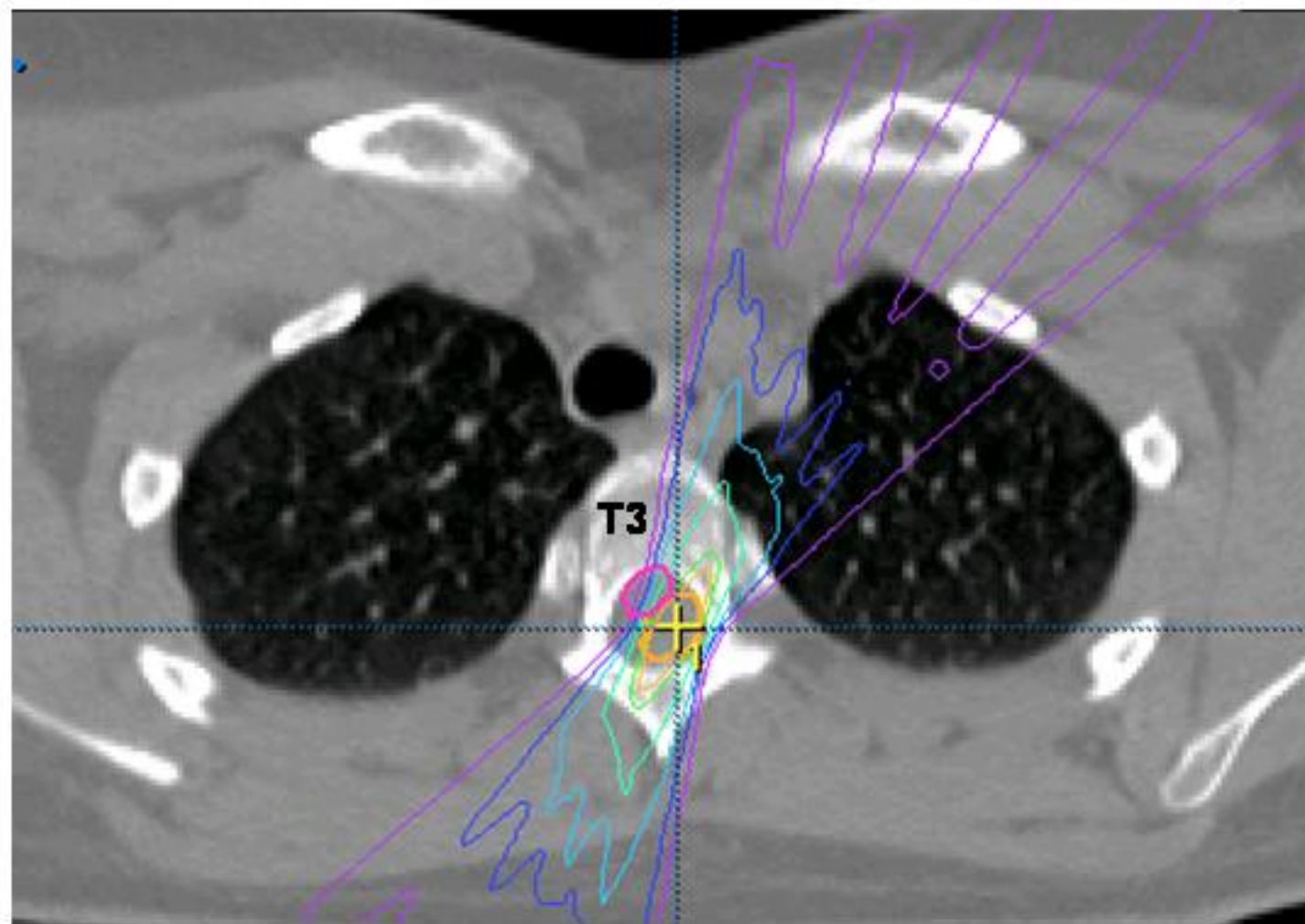


Figure 4: Radiosurgery used to treat cancer pain in a patient with Metastatic lesion to T3 vertebrae and intense dermatomal pain. Patient treated as an out patient with a single application. Pain resolution in 3 days.